



SIZE RANGE: 4-16

SAMPLE SIZE: 8

Main Label:

Henry Lee	
H L Petites	
D. Roberts	
600 West	XXX



STYLE #:

DESCRIPTION: PEARL EDGE RUFFLED JACKET WITH SCARF

FABRIC: CANSTAR GZ OR 0038 "MALLED CHENILLE"

TECHNICAL DESIGNER/PATTERNMAKER: KT

DESIGNER: LS

FRONT:

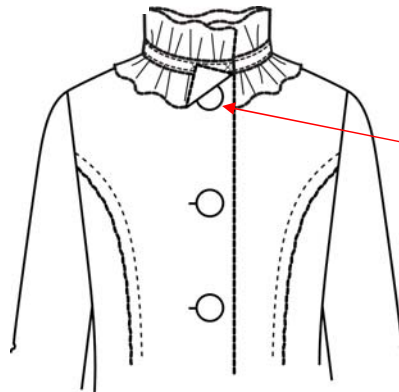
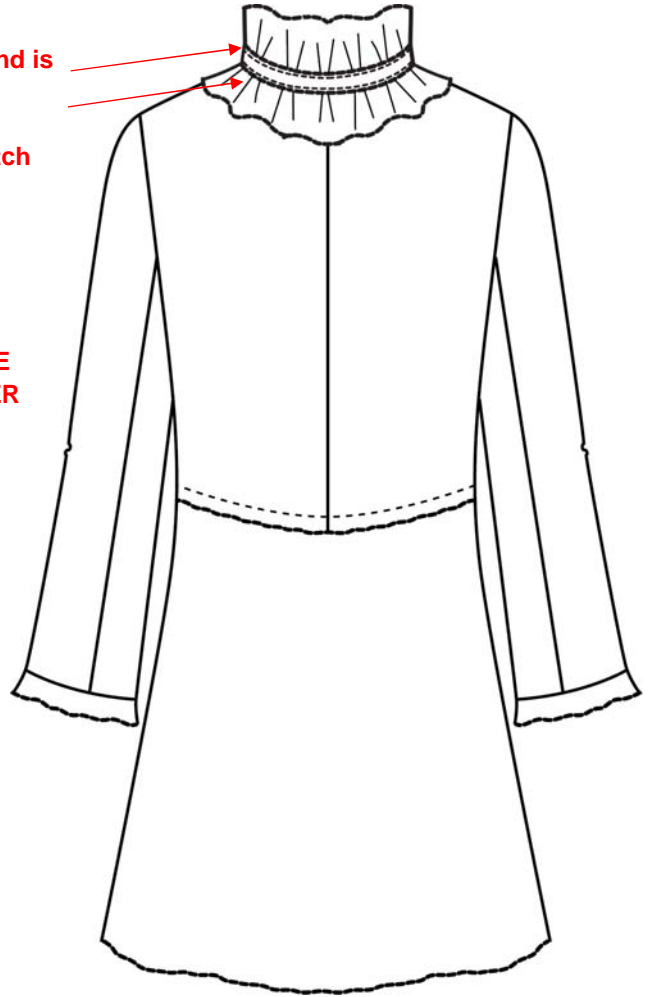
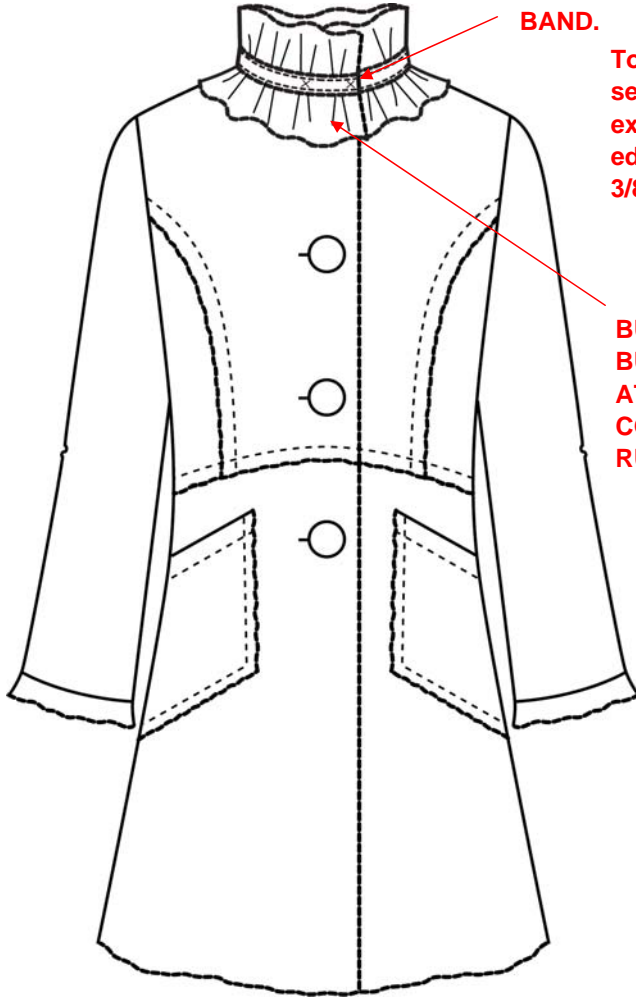
2 COVERED SNAPS AT NECK BAND.

BACK:

Top collar stand is sewn flat with exposed pearl edges. Topstitch 3/8"

BUTTON / BUTTONHOLE AT C.F. UNDER COLLAR RUFFLE.

BUTTON / BUTTONHOLE AT C.F. UNDER COLLAR RUFFLE.



# Henry Lee and Company

DATE: 09/10/07 SEASON: FALL '08 PROTO# WFL8-150 BONATEX

SIZE RANGE: 4-16

SAMPLE SIZE: 8

## Main Label:

Henry Lee

H L Petites

D. Roberts

600 West

XXX



STYLE #:

DESCRIPTION: PEARL EDGE RUFFLED JACKET WITH SCARF

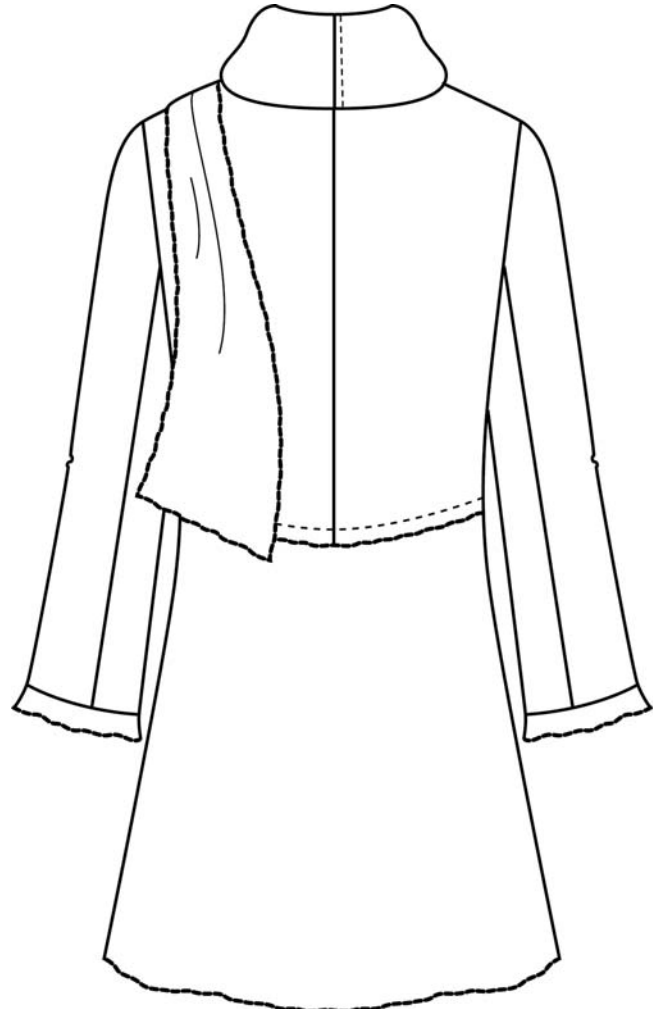
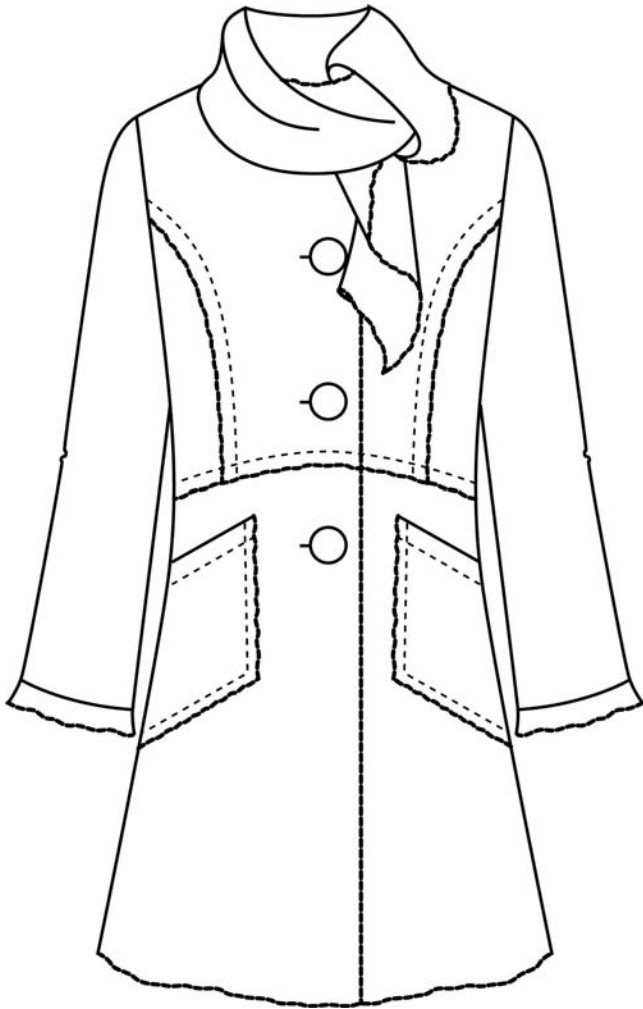
FABRIC: CANSTAR GZ OR 0038 "MALLED CHENILLE"

TECHNICAL DESIGNER/PATTERNMAKER: KT

DESIGNER: LS

FRONT:

BACK:



JACKET SHOWN WITH SCARF

SIZE RANGE: 4-16

SAMPLE SIZE: 8

Main Label:

Henry Lee

H L Petites

D. Roberts

600 West

XXX



STYLE #:

DESCRIPTION: PEARL EDGE RUFFLED JACKET WITH SCARF

FABRIC: CANSTAR GZ OR 0038 "MALLED CHENILLE"

TECHNICAL DESIGNER/PATTERNMAKER: KT

DESIGNER: LS

FRONT:



Buttonhole

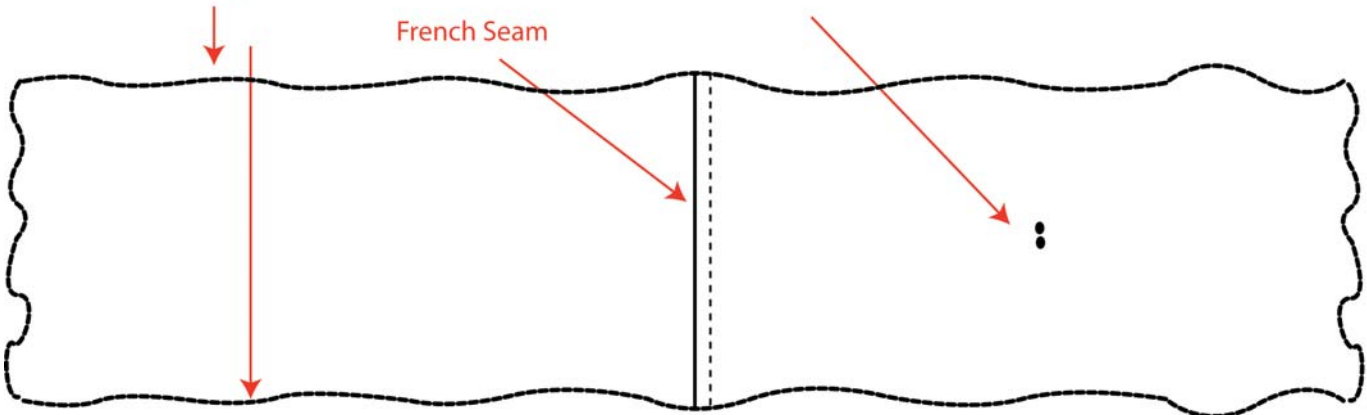


Decorative Button sewn on top of loop.

Pearl Edge Finish

Button is sewn on wrong side with thread sewn through to right side.

French Seam



## HENRY LEE AND CO. TECHNICAL FIT COMMENTS PAGE

SUPPLIER:	BONATEX			Date:	7/10/2007		
SUP. Contact:	LEVIN			Page #:	of		
SEASON:	FALL '08	STYLE #:		Designer:	L		
KNITS DEV#:		PROTO #:	WFL8-150	Patternmaker:	K		
Description:	PEARL EDGE RUFFLED JACKET WITH SCARF			Label:		Plcmt:	LP03
FABRIC:	CANSTAR GZ OR 0038 "MALLED CHENILLE"						
Attendees:				DEPT/DIV:	600WEST		
Model:				Sample Size:	8		
Sample Type:	PROPOSED MEAS			SIZE RANGE:	4-16		
Status:	SUBMIT 1ST PROTO SAMPLE			Dig. Pics:	1 SWATCH PAGE		
Next Sample:	1ST PROTO SAMPLE	Due Date:					

### STYLING/CONSTRUCTION

#### 1. FABRIC & COLOR:

- CANSTAR GZ OR 0038 "MALLED CHENILLE"
- Color: MULTI
- See attached swatch page for more fabric info.

#### 2. REFERENCE SAMPLE:

- **SEE SENT REFERENCE SAMPLE FOR DESIGN & CONSTRUCTION. PLEASE NOTE:**

#### 3. LINING:

- Best Quality Acetate lining in Amber Color.
- Jacket body is half lined with full sleeve lining. Attach Lining to body with a chain stitch at seam. See Sent Sample.

#### 4. FACINGS:

- FRONT & BACK

#### 5. PRINCESS SEAMS:

- TOP FRONT

#### 6. OVERLAP SEAM WITH 3/8 TOPSTITCH:

- FRONT PRINCESS SEAM
- WAIST SEAM
- SIDE SKIRT SEAM

#### 7. PEARL EDGE FINISH:

- ALL EDGES. SEE SENT SAMPLE.
- PATCH POCKETS

#### 8. COLLAR:

- Stand Collar is double layer.
- Clean Finish under collar. Top Collar Stand is sewn flat with exposed pearl edges. Topstitch 3/8" from pearl edge.
- Insert shirred ruffled collar to top and bottom of stand collar.

#### 9. DETACHABLE SCARF:

- Single Layer with Pearl Edges. Square Ends.
- See Fall '08 Proto Sample #WFL8-115 for Construction of Scarf Loop Detail

#### 10. SLEEVE:

- Sleeve has a seam with ruffle cuff at opening. See Sketch.

#### 11. POCKET:

- Single Layer with Pearl Edge Finish. Topstitch 3/8" from pearl edge. See Sent Sample.

#### 12. BUTTONS & BUTTONHOLES / COVERED SNAPS:

- 54L / 5 pcs.
  - i. 4 @ C.F.
  - ii. 1 @ Scarf Loop
- 24L / 1pc. Sew Button on wrong side of scarf for detachable loop. See Sketch.
- 28L / 2 pcs. Covered Snaps at stand collar. Cover Snaps with lining.
- Please use available for 1<sup>st</sup> proto. We will provide for dups. Thanks!

13. Please use Label # **LP03** for the 1<sup>st</sup> proto sample. Thank you!

14. Please start the 1<sup>st</sup> proto ASAP & advise status. Thank you!

15. Please advise average yardage yield (fabric consumption) & price estimate without quota. Don't include 5% wastage..

### FIT/SIZING

1. Please follow the given spec measurements and sketch in making the 1<sup>st</sup> proto sample. Thank you!